

Audition Sides - Charlie-In-The-Box, Spotted Elephant, Dolly

DONNER

That's my buck!

(The sleigh exits the stage as The Island of Misfit Toys appears.)

SCENE 13 – THE ISLAND OF MISFIT TOYS

(The MISFIT TOYS are around the campfire.)

START

CHARLIE-IN-THE-BOX

Well – it's Christmas Eve... but...

SPOTTED ELEPHANT

Looks like we're forgotten again.

DOLLY

But Rudolph promised we'd go this time.

CHARLIE-IN-THE-BOX

Oh, guess the storm was too much for them. Just as well go to bed and start dreaming about next year...

DOLLY

I haven't any dreams left to dream. We'll never get off this island. Never.

END

(#49 – A MERRY, MERRY CHRISTMAS TO YOU begins.)

A MERRY, MERRY CHRISTMAS TO YOU

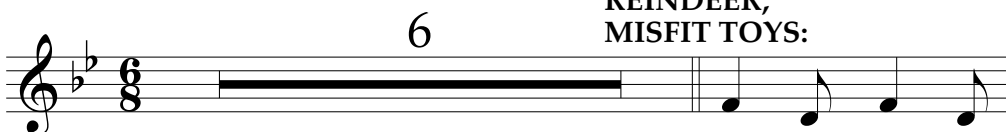
(Sound of jingle bells is heard.)

SPOTTED ELEPHANT: Wait a minute... what's that? Is it? Is it?

CHARLIE-IN-THE-BOX: It sure is! It's SANTA!!
And look, Rudolph is leading the way!

DOLLY: You can see his nose from here!

**SANTA,
REINDEER,
MISFIT TOYS:**



Mer - ry mer - ry